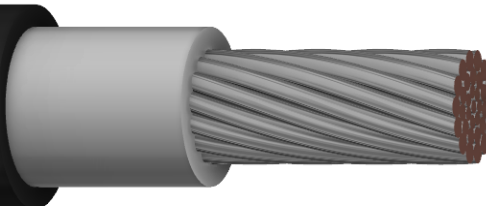




GLgGb/c-K FLEX 450/750V, GLggGb/c-K FLEX 450/750V

ROGUM KABLE SP. Z O.O.



Power cables insulated and sheathed in flexible polymeric material for rolling stock.
Single-core cables for rated voltage of 750 V.

Standard: ZN-FKR-013:2005/A1:2016

Related standards: PN-EN 60228:2007; PN-EN 50363-2-1:2008; PN-89/E-29100.

CONSTRUCTION

Conductor Stranded tin plated copper wires, class 5 (Lg) or class 6 (Lgg)

Insulation Specialized copolymer compound, heat resistant with increased flexibility.

Color of insulation White

Tire Specialized polymer compound with increased flexibility.

Tire color Black

CHARACTERISTIC

Rated voltage 450/750 V

Test voltage 2,5 kV

Working temperature range od - 50 °C do + 90 °C

Minimum installation temperature - 20 °C

The minimum bending radius not less than: 5 D

Example of cable marking **ROGUM KABLE Sp. z o.o. GLgGb/c-K FLEX 450/750 V 1x35 mm² ID:2081725**
Power cable with cl. 5 copper conductors (Lg), with heat-resistant insulation (Gc) and flame-retardant sheath (G), for rolling stock (K). FLEX- increased flexibility.

APPLICATION

Wires for mobile connections in or between rail vehicles under conditions of frequent bending and exposure to weather and lubricants.

CERTIFICATE AND APPROVALS

ADDITIONAL INFORMATION

At the client's request, it is possible to:

- change the color of the insulation,
- manufacture of non-standard conduit with other cross sections at the request of the customer.

In matters relating to detailed technical data, please contact our Technical Advisor: doradztwotechniczne@rogum.com.pl

CARD NUMBER	36	RELEASE DATE	28-06-2023
--------------------	----	---------------------	------------



CONSTRUCTION					
GLgGb/c-K FLEX 450/750 V					
Cross-section of core	Max diameter of the wires in the core	Nominal thickness of the insulation	Nominal thickness of the sheath	Max cable diameter	Approximate weight of the cable
mm ²	mm	mm	mm	mm	kg/km
1,5	0,26	0,8	1,0	5,9	34
2,5	0,26	0,8	1,0	6,6	47
4	0,31	1,0	1,0	7,3	68
6	0,31	1,0	1,0	8,4	96
10	0,41	1,2	1,0	10,1	146
16	0,41	1,2	1,2	11,5	209
25	0,41	1,4	1,4	13,8	314
35	0,41	1,4	1,4	15,4	419
50	0,41	1,4	1,4	17,0	573
70	0,51	1,5	1,5	19,3	767
95	0,51	1,7	1,5	22,0	1011
120	0,51	1,8	1,6	24,5	1241
150	0,51	2,0	1,6	26,4	1546
185	0,51	2,2	1,7	29,2	1912
240	0,51	2,4	1,7	33,5	2369
300	0,51	2,6	1,8	37,3	2996

CONSTRUCTION					
GLggGb/c-K FLEX 450/750 V					
Cross-section of core	Max diameter of the wires in the core	Nominal thickness of the insulation	Nominal thickness of the sheath	Max cable diameter	Approximate weight of the cable
mm ²	mm	mm	mm	mm	kg/km
1,5	0,21	0,8	1,0	5,9	34
2,5	0,21	0,8	1,0	6,8	47
4	0,21	1,0	1,0	7,7	68
6	0,21	1,0	1,0	8,4	96
10	0,21	1,2	1,0	9,9	146
16	0,21	1,2	1,2	11,6	209
25	0,21	1,4	1,4	14,0	314
35	0,21	1,4	1,4	15,6	419
50	0,31	1,4	1,4	17,8	573
70	0,31	1,5	1,5	19,6	767
95	0,31	1,7	1,5	22,6	1011
120	0,31	1,8	1,6	24,3	1241
150	0,31	2,0	1,6	27,2	1546
185	0,31	2,2	1,7	29,9	1912



PARAMETERS	
Cross-section of core	The highest conductor resistance at 20 °C
mm²	Ω/km
1,5	13,7
2,5	8,21
4	5,09
6	3,39
10	1,95
16	1,24
25	0,795
35	0,565
50	0,393
70	0,277
95	0,210
120	0,164
150	0,132
185	0,108
240	0,0817
300	0,0654